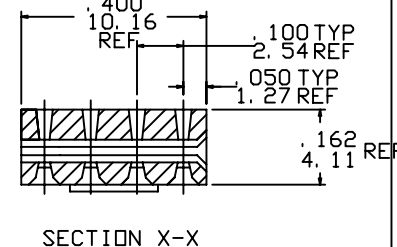
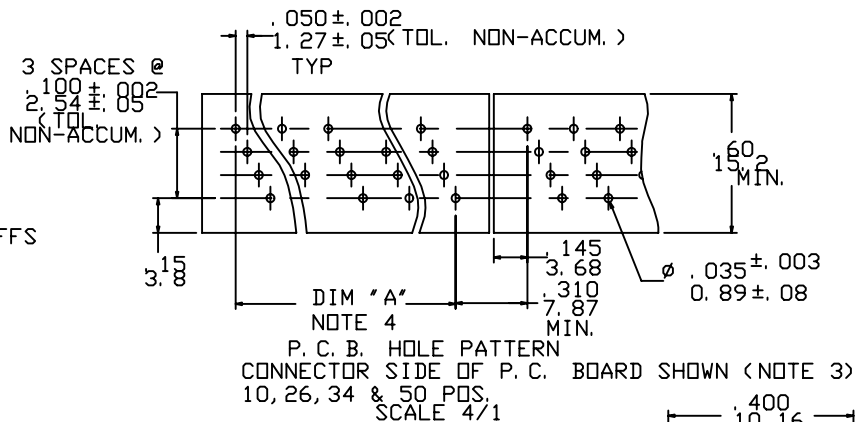
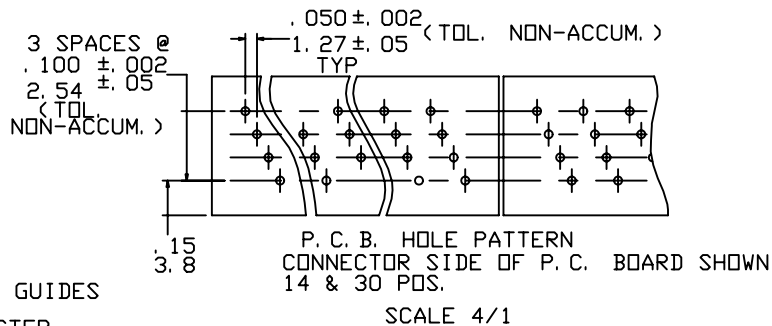
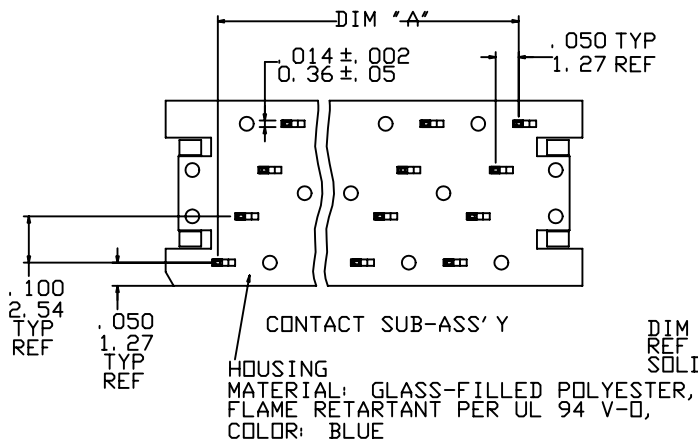
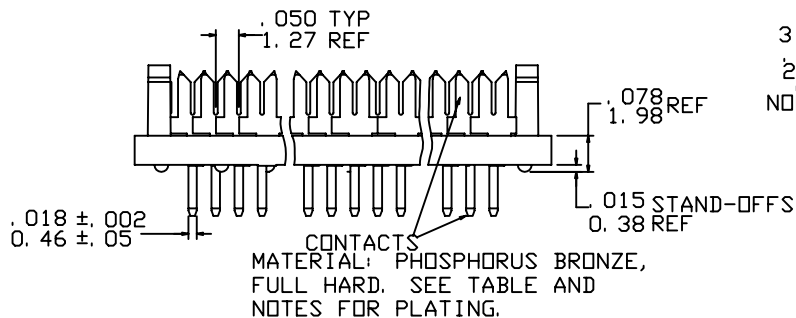
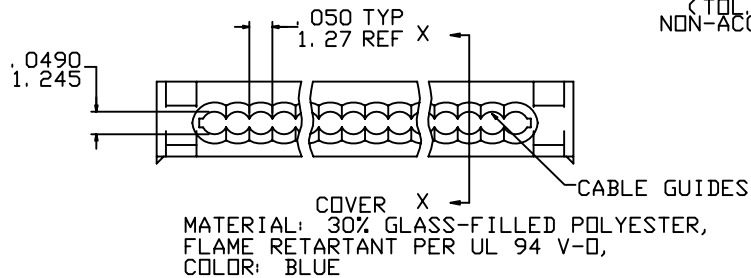


Tous droits strictement réservés. Reproduction ou communication à des tiers interdite sous quelque forme que ce soit sans autorisation écrite du propriétaire.
 Property of ©FCI ELECTRONICS. Copyright ©FCI ELECTRONICS INC. Droits de reproduction FCI ELECTRONICS INC.



All rights strictly reserved. Reproduction or issue to third parties in any form whatever is not permitted without written authority from the proprietor.
 Property of ©FCI ELECTRONICS. Copyright ©FCI ELECTRONICS INC.

PRODUCT NO.
SEE TABLE


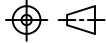
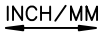


mat'l. code				tolerances unless otherwise specified		CUSTOMER COPY	FCI www.fciconnect.com
ltr	ecn no	dr	date	linear	angles		
P	V11058	JM	6/12/91	.XX ±.01	0° ±2°	projection	title QUICKIE P.C.B. CONNECTOR 10,14,26,30,34, & 50 POS.
R	V50805	LSS	7/5/95	.XXX ±.005		INCH/MM	
S	N05-0123	ZC	5/9/05	.XXXX ±.0020		scale	
T	N07-0199	WG	08/27/07			2.5:1	
sheet index				revision sheet	T T	product family size dwg no	
				1 2	A 65495		code -
						sheet 1 of 2	

	NO. OF POS.	DIM "A"	DIM "B"	DIM "C" REF	SEE NOTE
65495-017(LF)	10	. 450/11. 43	. 700/17. 78	. 100/2. 54	1
-018(LF)				2	
-019(LF)				1	
-020(LF)				2	
-021(LF)	26	1. 250/31. 75	1. 500/38. 10	. 100/2. 54	1
-022(LF)				2	
-023(LF)				1	
-024(LF)				2	
-025(LF)	34	1. 650/41. 91	1. 900/48. 26	. 100/2. 54	1
-026(LF)				2	
-027(LF)				1	
-028(LF)				2	
-029(LF)	50	2. 450/62. 23	2. 700/68. 58	. 100/2. 54	1
-030(LF)				2	
-031(LF)				1	
-032(LF)				2	
-033(LF)	14	. 650/16. 51	. 900/22. 86	. 100/2. 54	1
-034(LF)				2	
-035(LF)				1	
-036(LF)				2	
-037(LF)	30	1. 450/36. 83	1. 700/43. 18	. 100/2. 54	1
-038(LF)				2	
-039(LF)				1	
65495-040(LF)				2	

NOTES:

- ① 50u"/1.27uM MIN. Ni UNDERPLATE OVER ENTIRE TERMINAL. AND Au FLASH ON SOLDER TAIL ONLY.
- ② 65495-***: 150u"/3.81uM MIN. TIN/LEAD 93/7 OVER ENTIRE TERMINAL. 50u"/1.27uM MIN. Ni UNDERPLATE.
65495-***LF: 150u"/3.81uM MIN. MATTE TIN OVER ENTIRE TERMINAL. 50u"/1.27uM MIN. Ni UNDERPLATE.
- ③ SEE TA 247 FOR MORE INFORMATION.
- 4. PATTERN SHOWN FOR CENTER TEN CONTACTS IS TYPICAL FOR ALL CONNECTOR LENGTHS, EXCEPT 14 & 30 POSITIONS.
- 5. SUB-ASSEMBLY & COVER PACKED SEPARATELY.
- 6. THE HOUSING OF XXXXX-XYLF WILL WITHSTAND EXPOSURE TO 260°C PEAK TEMPERATURE FOR 10 SECONDS IN A WAVE SOLDER PROCESS.

mat'l. code				tolerances unless otherwise specified		CUSTOMER COPY		 www.fciconnect.com	
ltr	ecn no	dr	date	linear	.XX ±.01/.0±.3		projection	 title QUICKIE P.C.B CONNECTOR 10,14,26,30,34,& 50 POS.	
T					.XXX ±.005/.00±.13				
					.XXX ±.0020/.000±.051				
				angles	0° ±2'		 INCH/MM	product family	
				dr	J.MUSTARD	6/11/91		code	
				enr	M.SMYK	6/11/91		-	
				chr	W.FUNK	6/11/91		sheet	
				appd	M.SMYK	6/11/91	scale	2 of	
sheet index	revision sheet	T	2				1:1	A	65495

Tous droits strictement reserves. Reproduction ou communication a des tiers interdite sous quelque forme que ce soit sans autorisation écrite du propriétaire.
 Property of ©FCI ELECTRONICS. Copyright ©FCI ELECTRONICS INC.

All rights strictly reserved. Reproduction or issue to third parties in any form whatever is not permitted without written authority from the proprietor.
 Property of ©FCI ELECTRONICS. Copyright ©FCI ELECTRONICS INC.

